

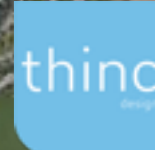


Corktown Parks

Public Meeting



City of Toronto



15-04-20

Agenda

1. Reasons for Study
 2. Consultation to Date
 3. Parks Evaluation
 4. Community Context
 5. Bright St. Playground
 6. Orphans' Green (Dog Off Leash)
 7. Little Trinity Church Lands
 8. Percy Park
 9. Sackville Park
 10. Sumach-Shuter Parkette
 11. General Questions (5 min)
 12. Workshop/ Group Discussions (20 min)
 13. Next Steps
 14. Closing Remarks
-
- The diagram consists of two blue brackets on the right side of the agenda. The top bracket, labeled 'overall', spans items 1 through 4. The bottom bracket, labeled 'site-specific', spans items 5 through 10. The labels 'overall' and 'site-specific' are written in a light blue, lowercase, spaced-out font.

Reasons for Study?

1. Rapid Development in area
2. Evaluate the opportunities
3. Provide Design Program
4. Park construction on Bright St. Playground and Orphans' Green (Dog Off Leash)
5. Provide costing to inform City Capital budget
6. Provide guide for future detailed design and further community consultation

Vision

the community initiative/ goal:

Enhance Corktown parks,
considering each as part of a
larger recreational network

Vision

objectives

1. *Diversify* available activities in the parks
2. Treat *connections* between parks as part of the recreational experience
3. Use parks and connective spaces to reinforce *community* building

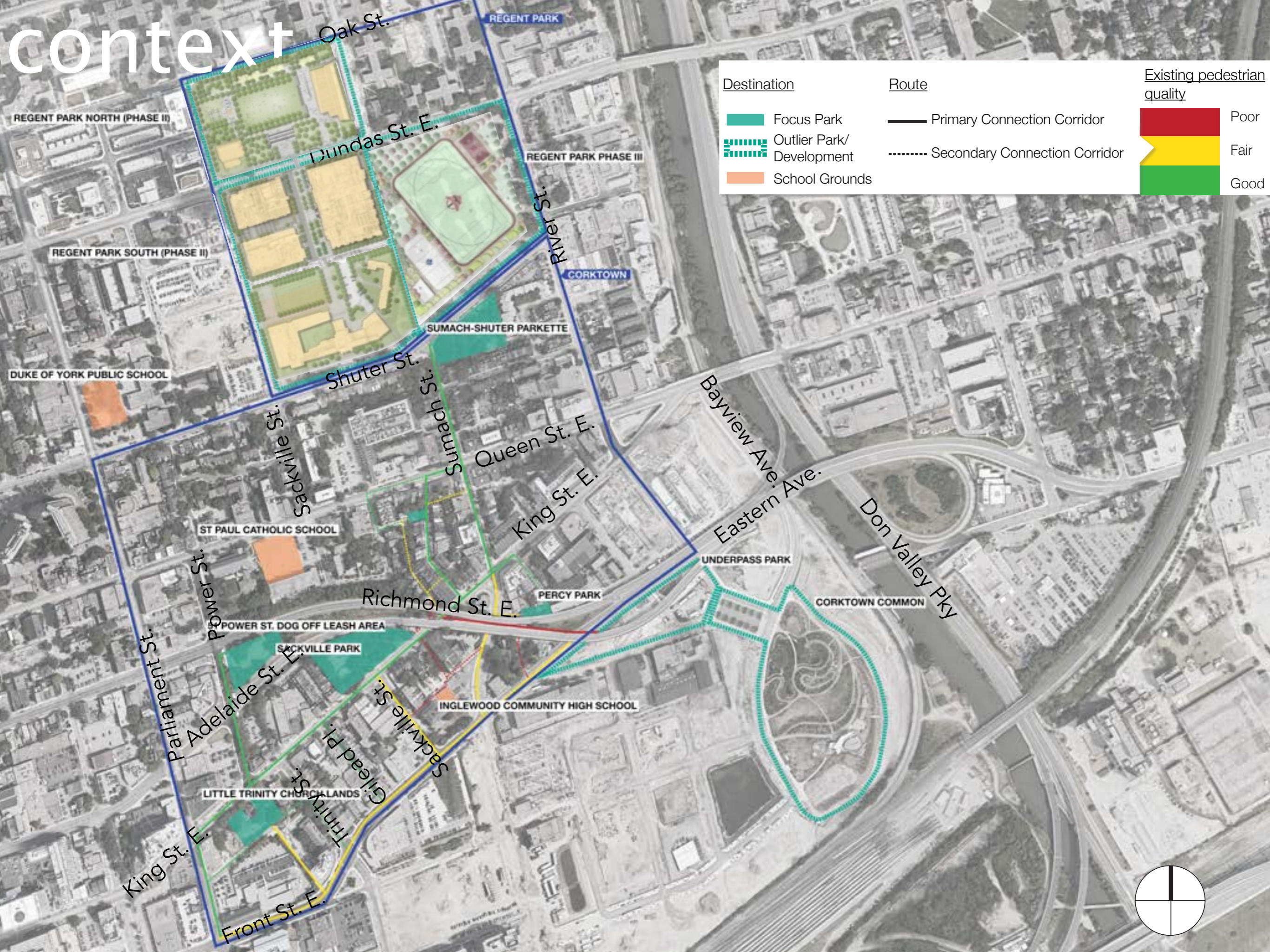
Consultation to Date

1. Community BBQ
2. Bright Street Community Meetings
3. Working Group Meetings
4. CRBA Presentations
5. Tonight's meeting

parks evaluation

inventory/analysis of
existing conditions

context

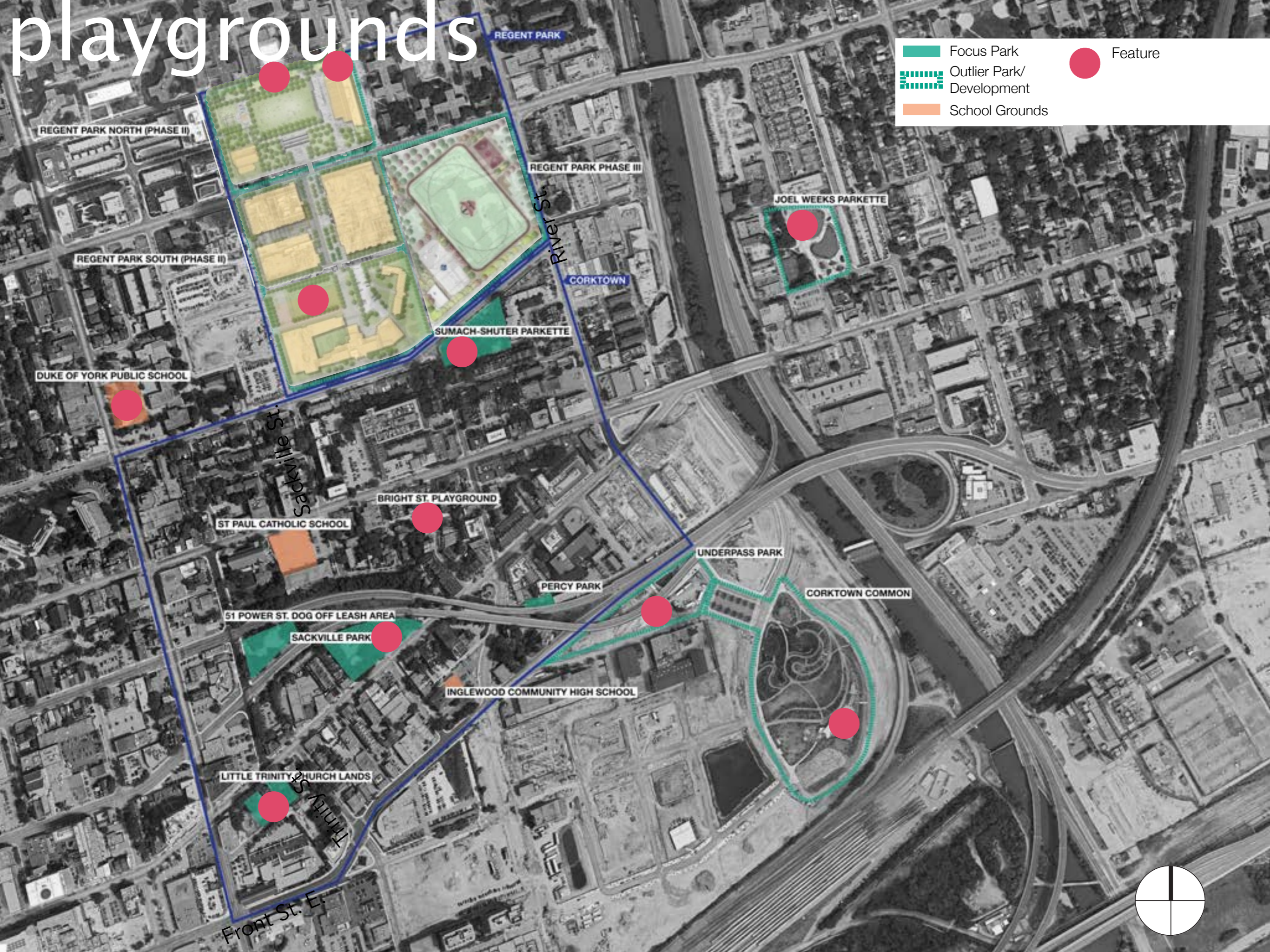


Destination	Route	Existing pedestrian quality
Focus Park	Primary Connection Corridor	Poor
Outlier Park/ Development	Secondary Connection Corridor	Fair
School Grounds		Good







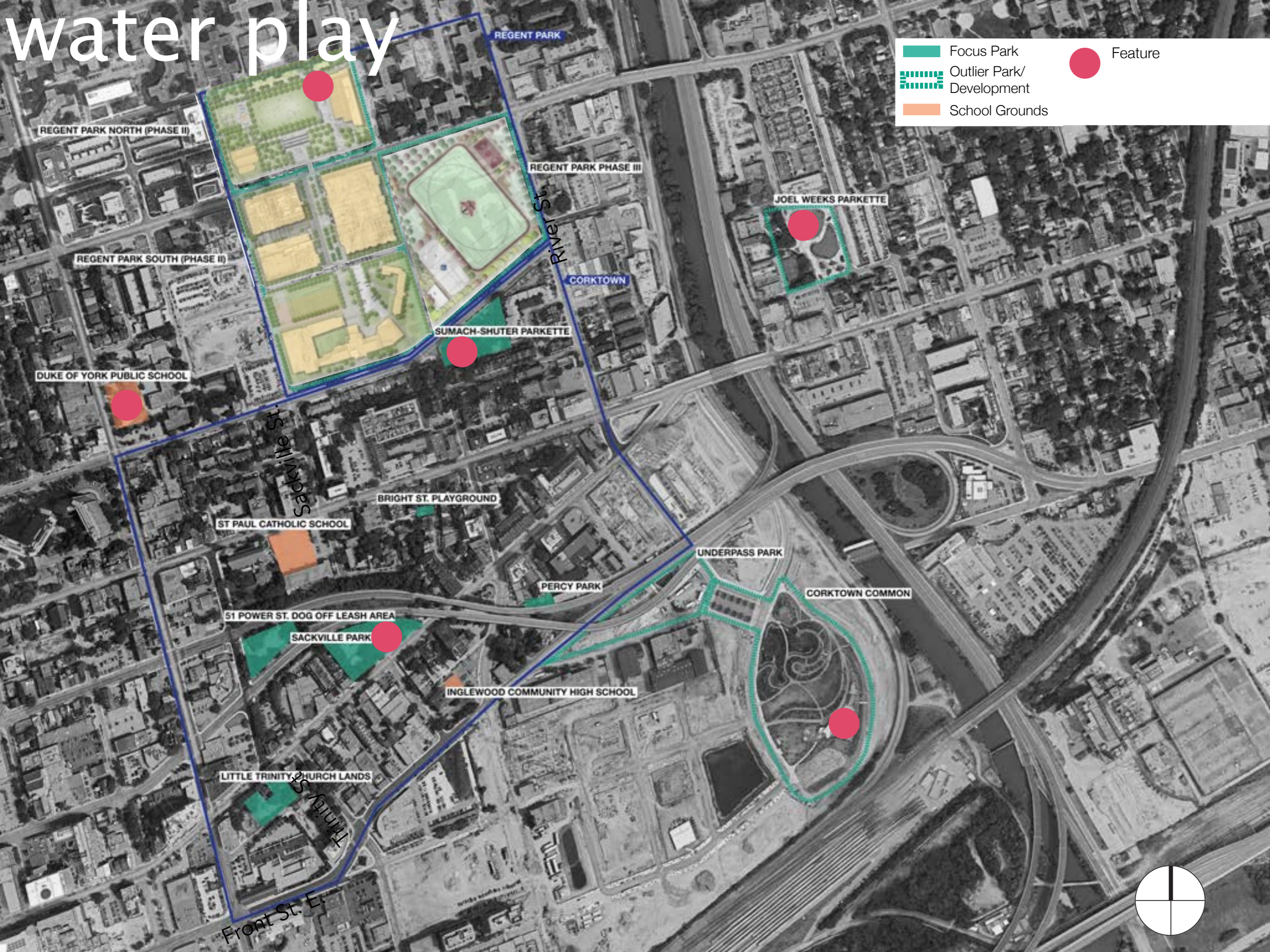
playgrounds

- Focus Park
- Outlier Park/Development
- School Grounds
- Feature







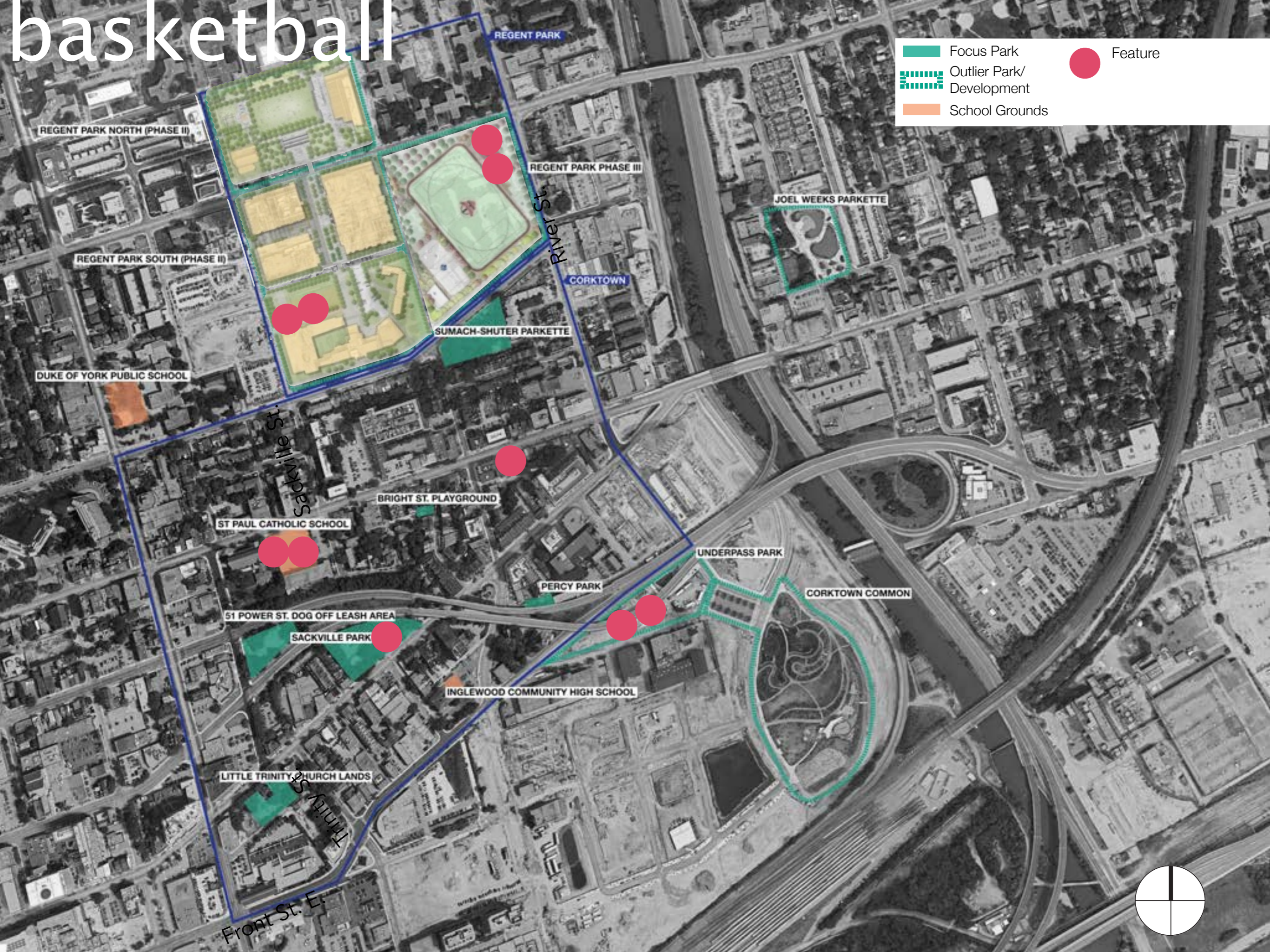
water play

-  Focus Park
-  Outlier Park/Development
-  School Grounds
-  Feature



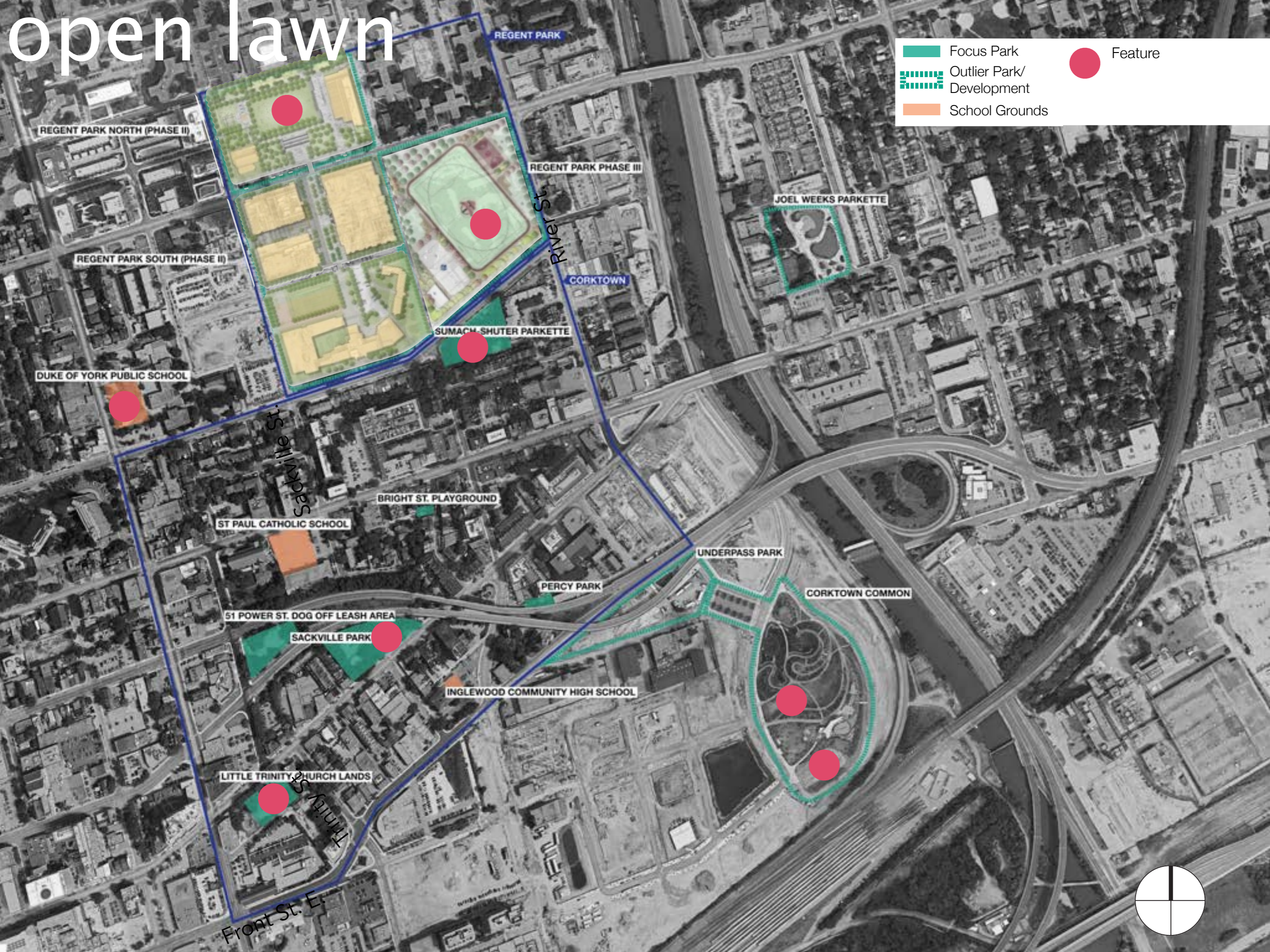
basketball

-  Focus Park
-  Outlier Park/Development
-  School Grounds
-  Feature



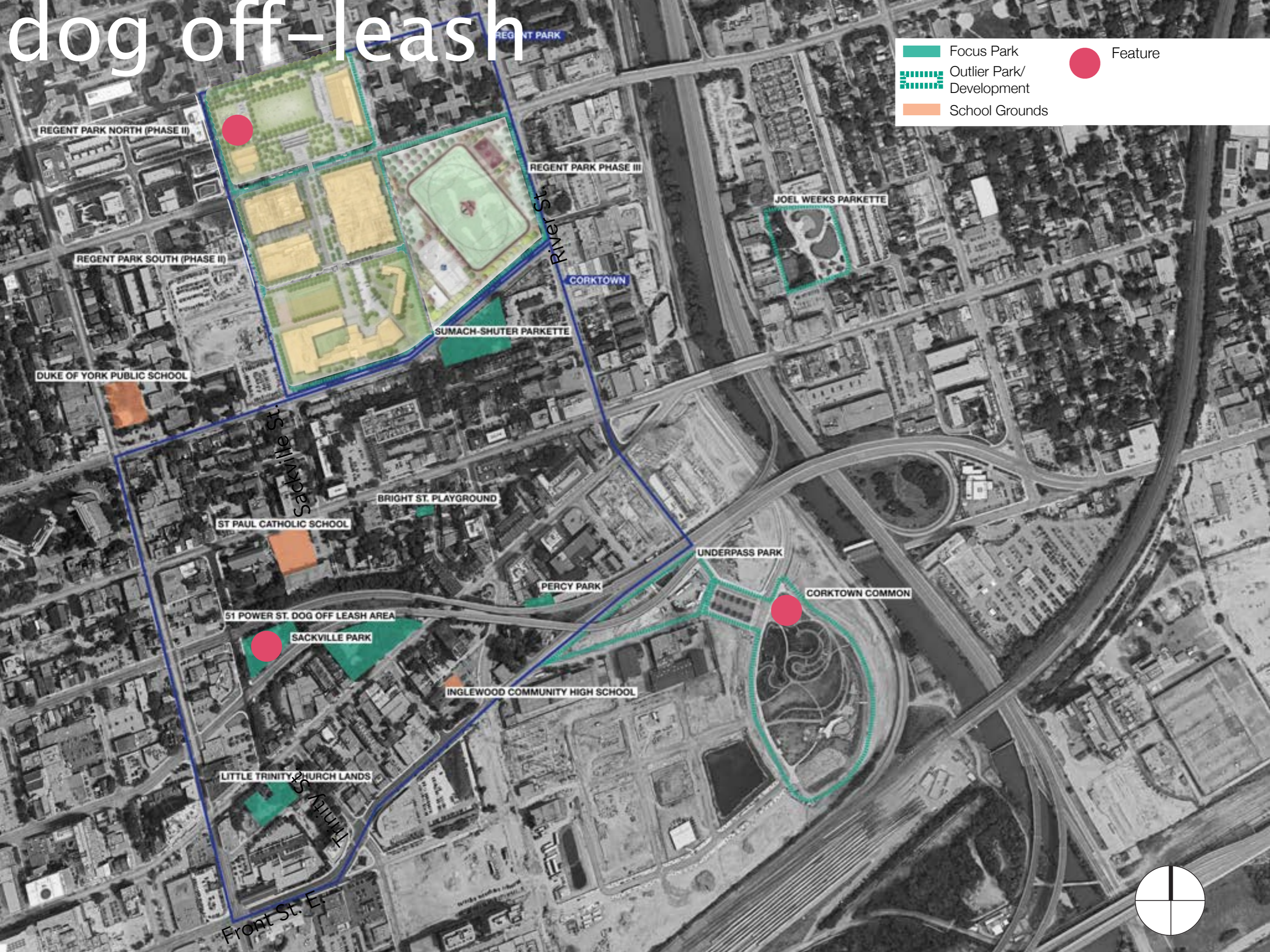
open lawn

- Focus Park
- Outlier Park/Development
- School Grounds
- Feature



dog off-leash

- Focus Park
- Outlier Park/Development
- School Grounds
- Feature



REGENT PARK NORTH (PHASE II)

REGENT PARK SOUTH (PHASE II)

DUKE OF YORK PUBLIC SCHOOL

Sackville St.

ST PAUL CATHOLIC SCHOOL

51 POWER ST. DOG OFF LEASH AREA

SACKVILLE PARK

LITTLE TRINITY CHURCH LANDS

Trinity St.
Front St. E.

REGENT PARK

REGENT PARK PHASE III

River St.

CORKTOWN

SUMACH-SHUTER PARKETTE

BRIGHT ST. PLAYGROUND

PERCY PARK

INGLEWOOD COMMUNITY HIGH SCHOOL

JOEL WEEKS PARKETTE

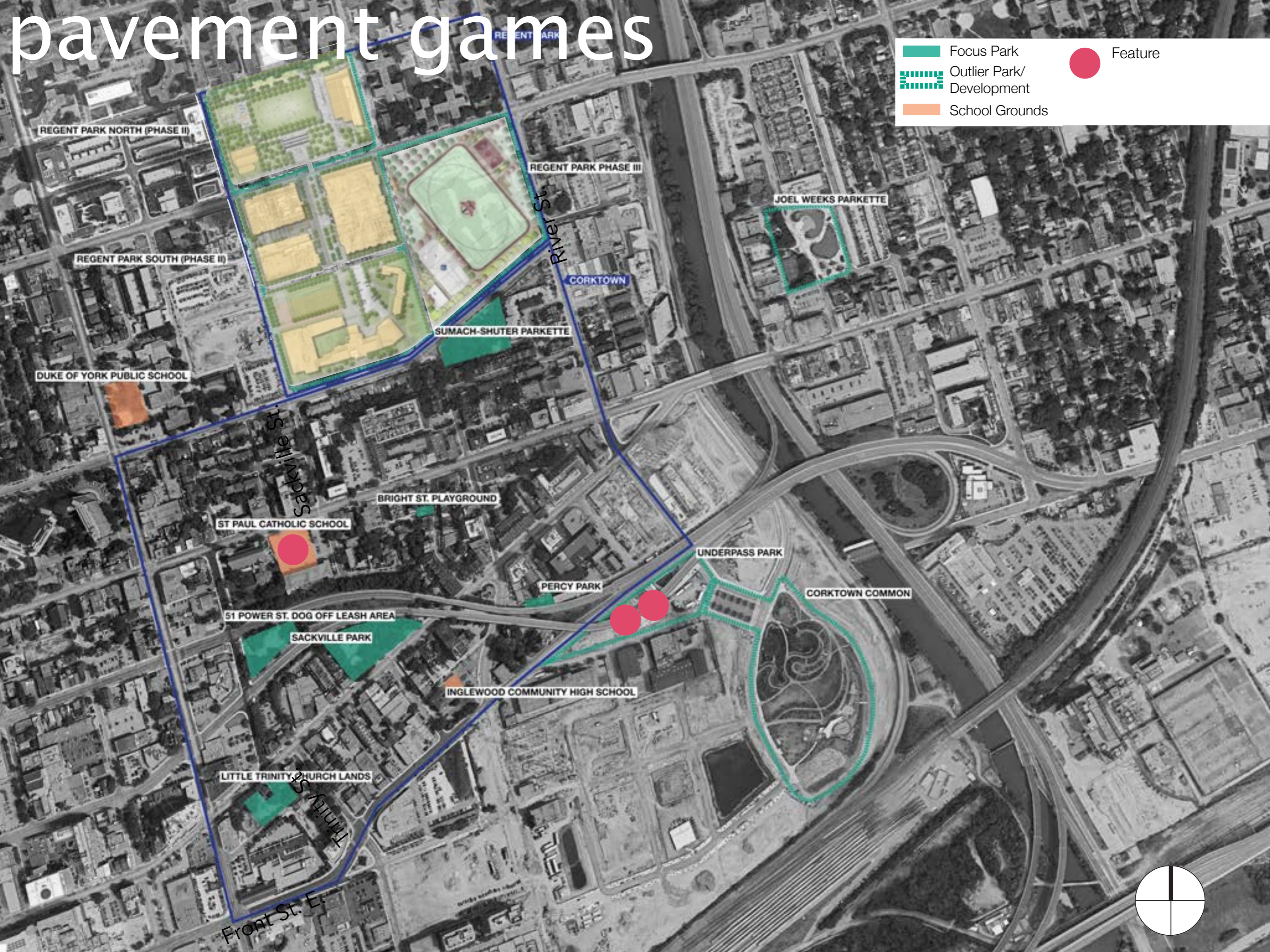
UNDERPASS PARK

CORKTOWN COMMON







pavement games

- Focus Park
- Outlier Park/Development
- School Grounds
- Feature







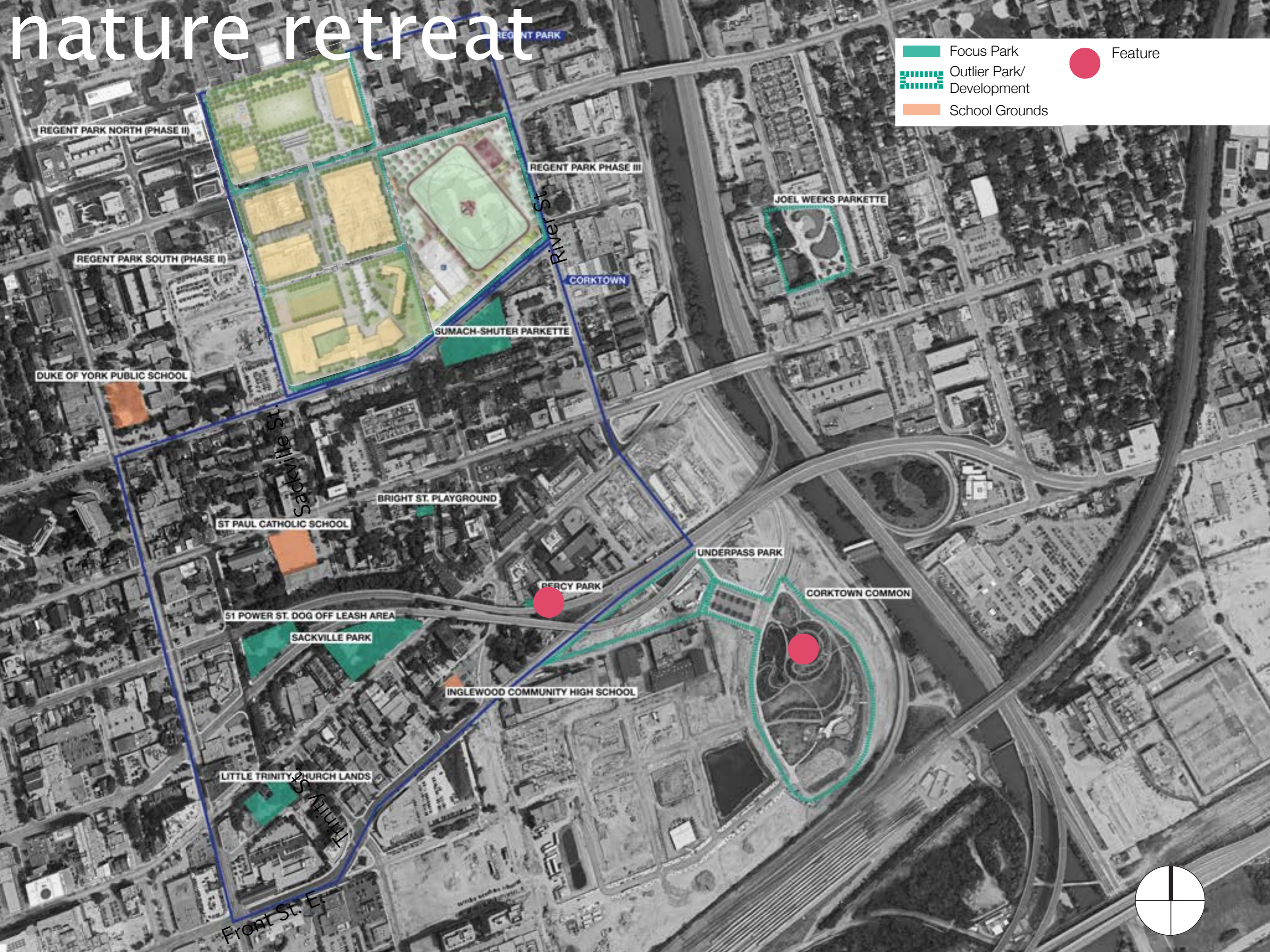
ice rinks

-  Focus Park
-  Outlier Park/Development
-  School Grounds
-  Feature



nature retreat

-  Focus Park
-  Outlier Park/Development
-  School Grounds
-  Feature



synthesis of recreation features

for the following diagrams...

1. “Focus parks” = parks of this study
 - Bright St., Little Trinity, Sackville, Sumach-Shuter, 51 Power St., Percy Park
2. Conditions - Bad =  Fair =  Good = 
3. “Adjacent parks” = Corktown Common, Regent Park, Underpass Park, school grounds

synthesis of recreation features

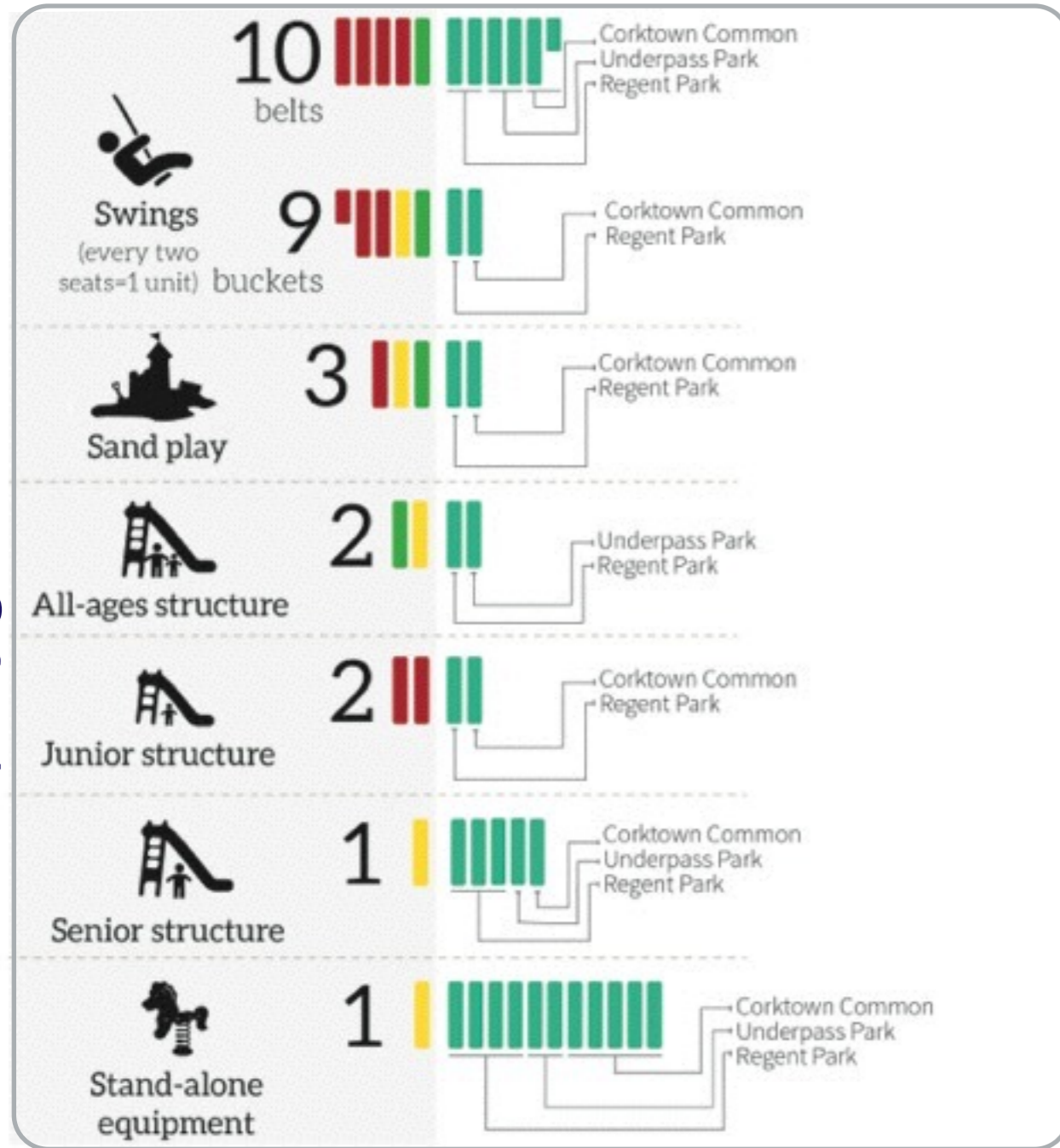
In focus parks

In adjacent parks

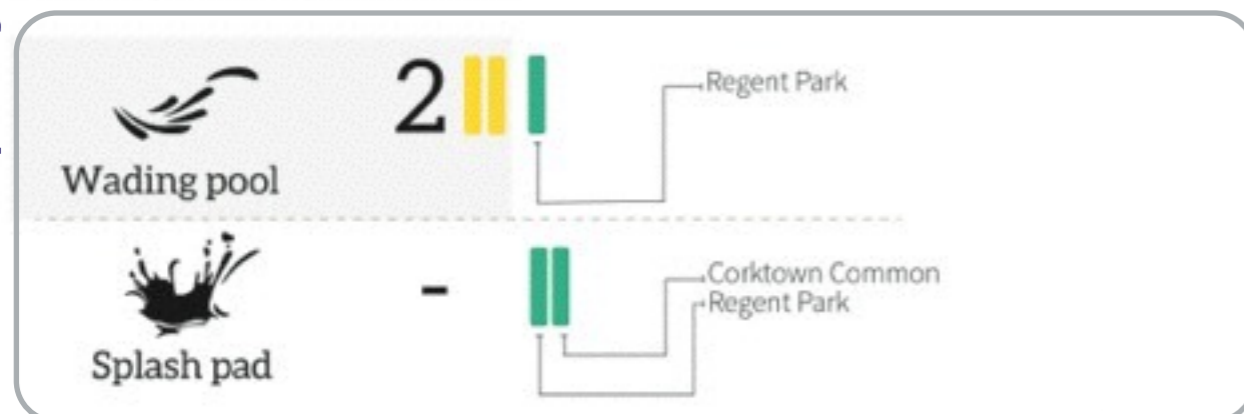
In focus parks

In adjacent parks

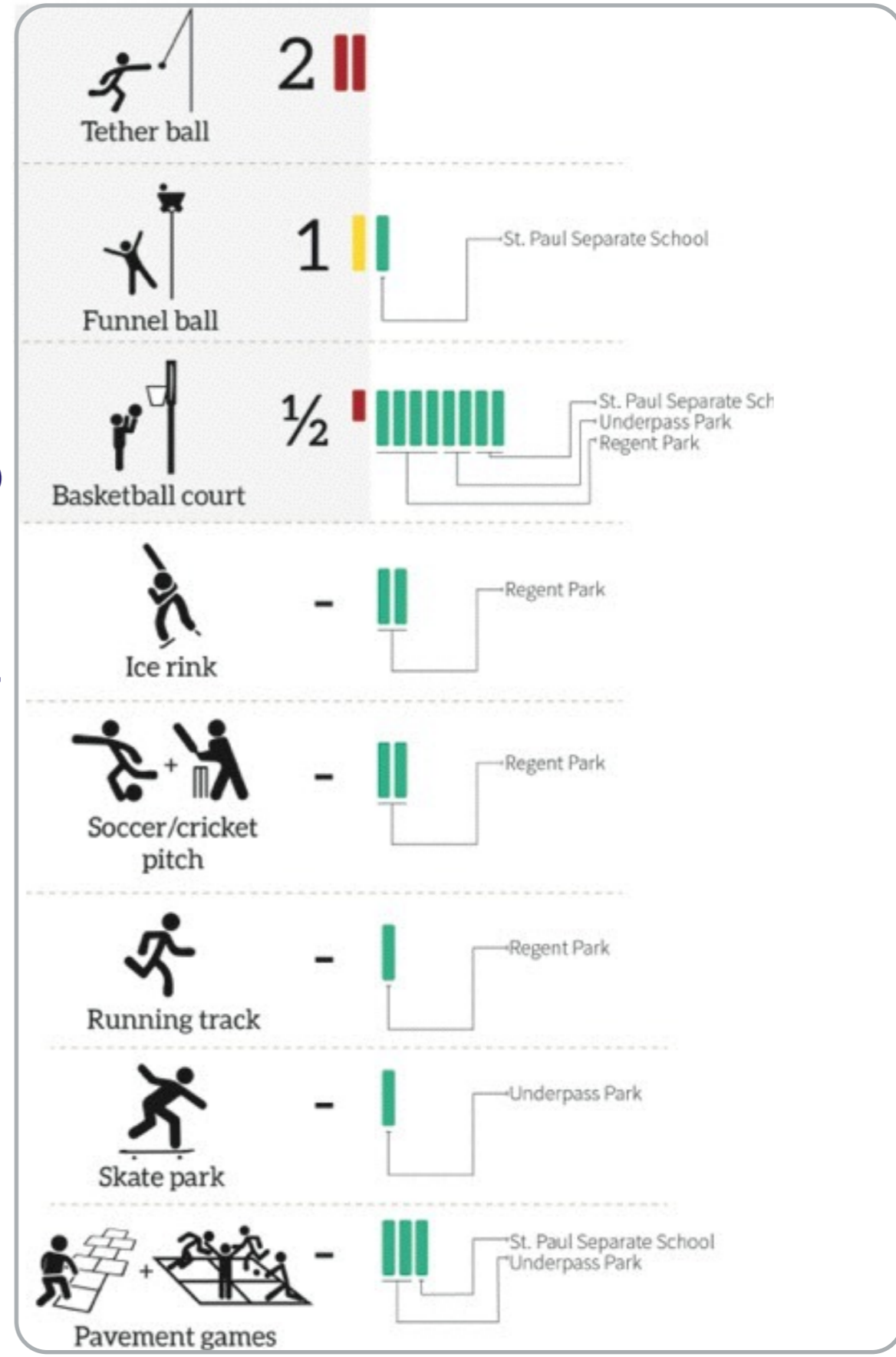
playground



water play

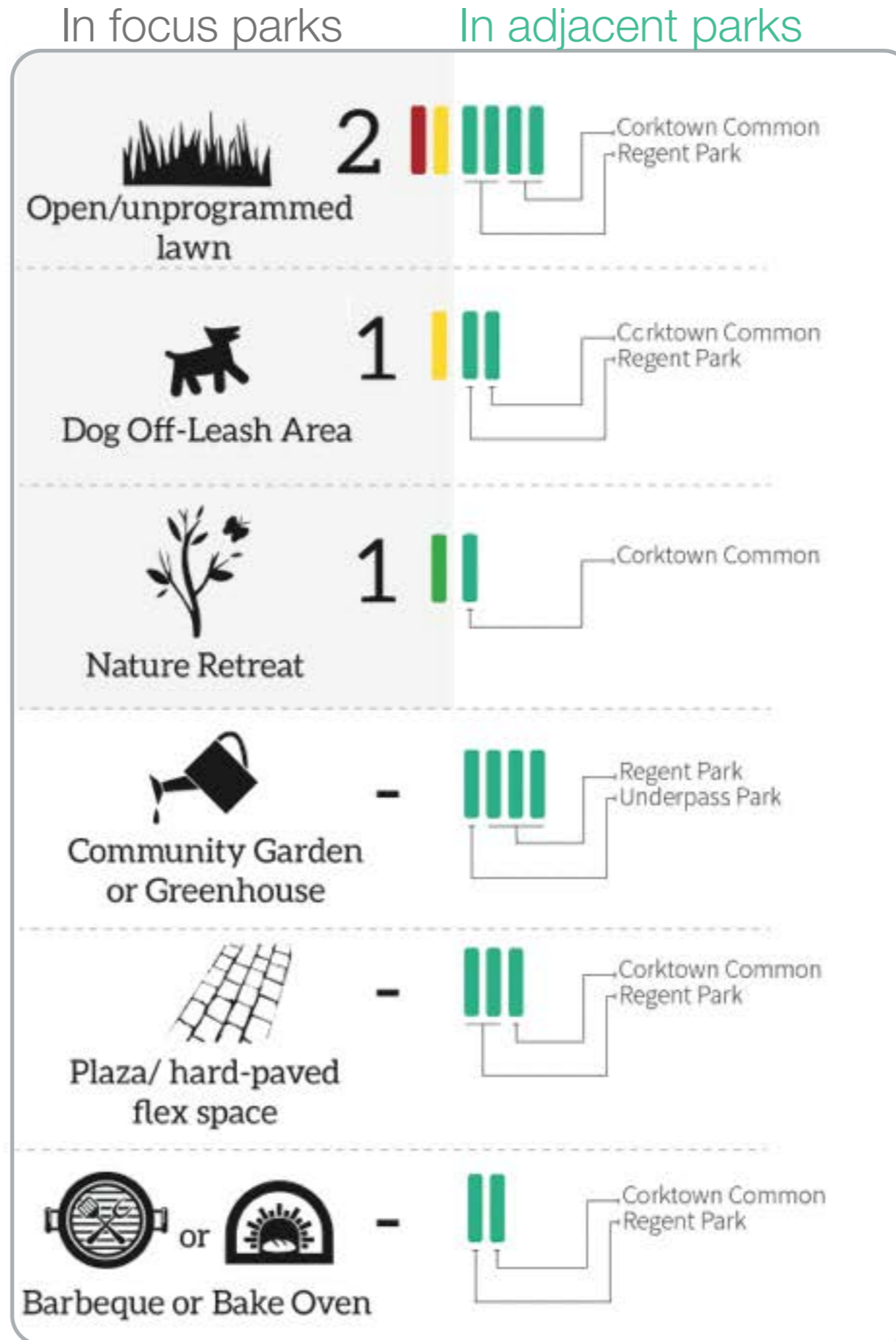


sports/games



synthesis of recreation features

passive recreation



community context

a cohesive, connected plan

Context



Regent Park

Regent Park Phase 3

Power St. DOLA

Bright Street Park

Sumach Shuter Park

Little Trinity Park

Sackville Park

Percy Park

Underpass Park

Corktown Common



The Vision

community
+ water play

active

community

community

pocket

pets

community
+ water play

contemplative

cultural

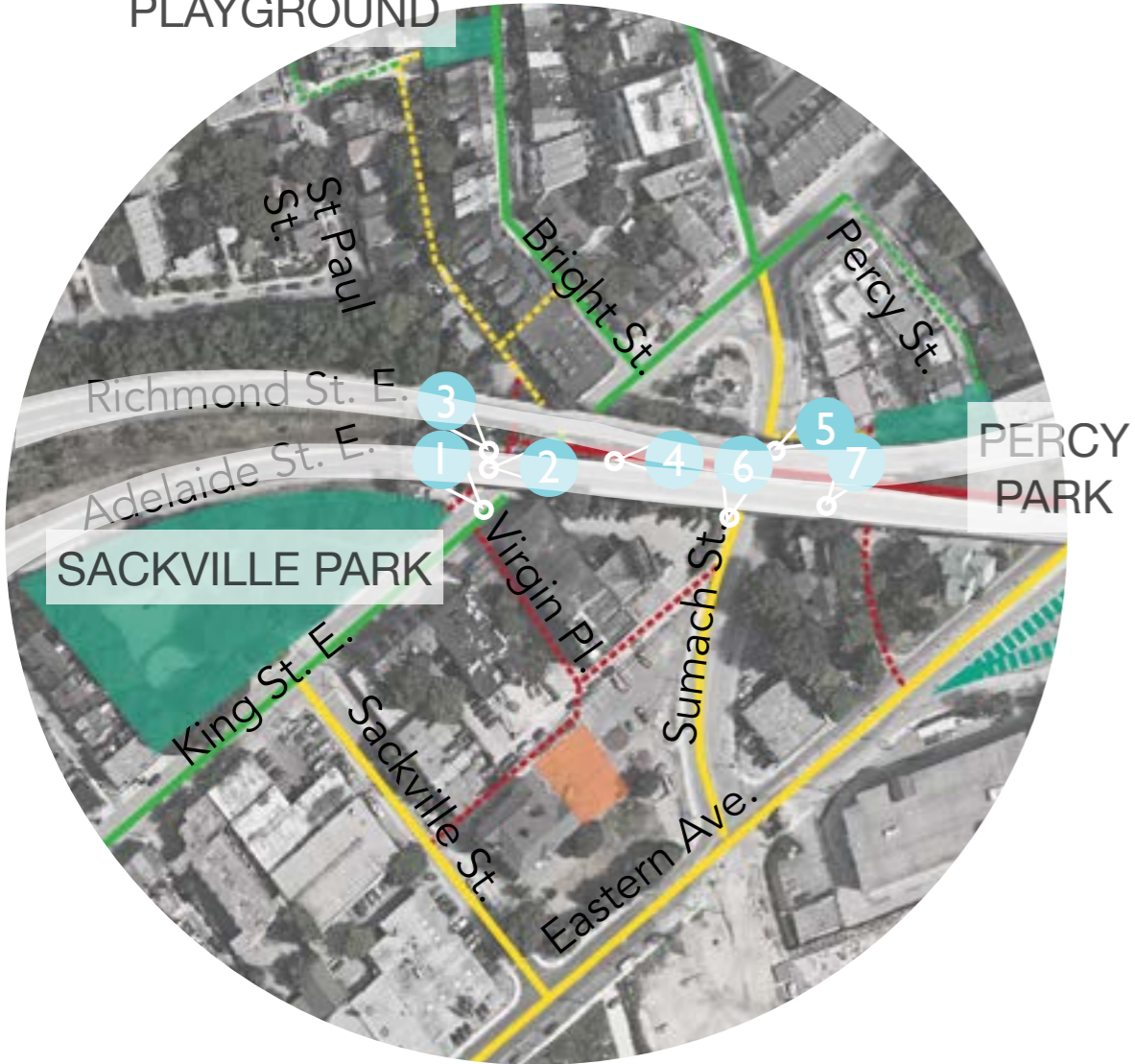
potential linear park connection

natural
+ water play

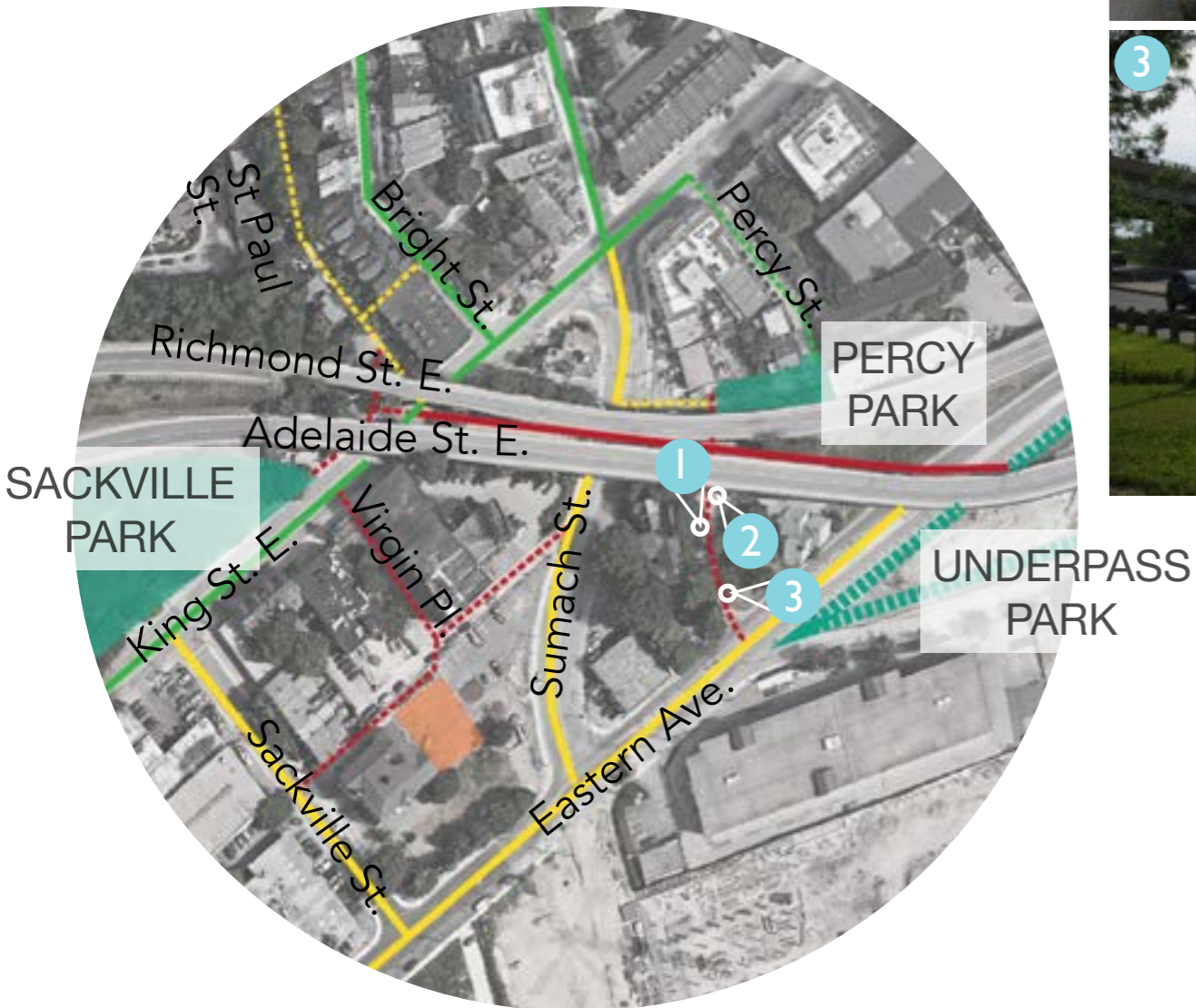


Under the Bridges

BRIGHT ST.
PLAYGROUND



Under the Bridges



Linear Park Addition

Potential Improvements

Pedestrian/Cycling Corridor



Extension of Underpass Park



Wayfinding



Vegetated Linear Park



Alleyways

SUMACH-SHUTER
PARKETTE



Alleyways



Alleyways' Enhancements

Potential Improvements

More lighting



Gateway features



Sculpture Series



Wayfinding murals



Corktown Parks

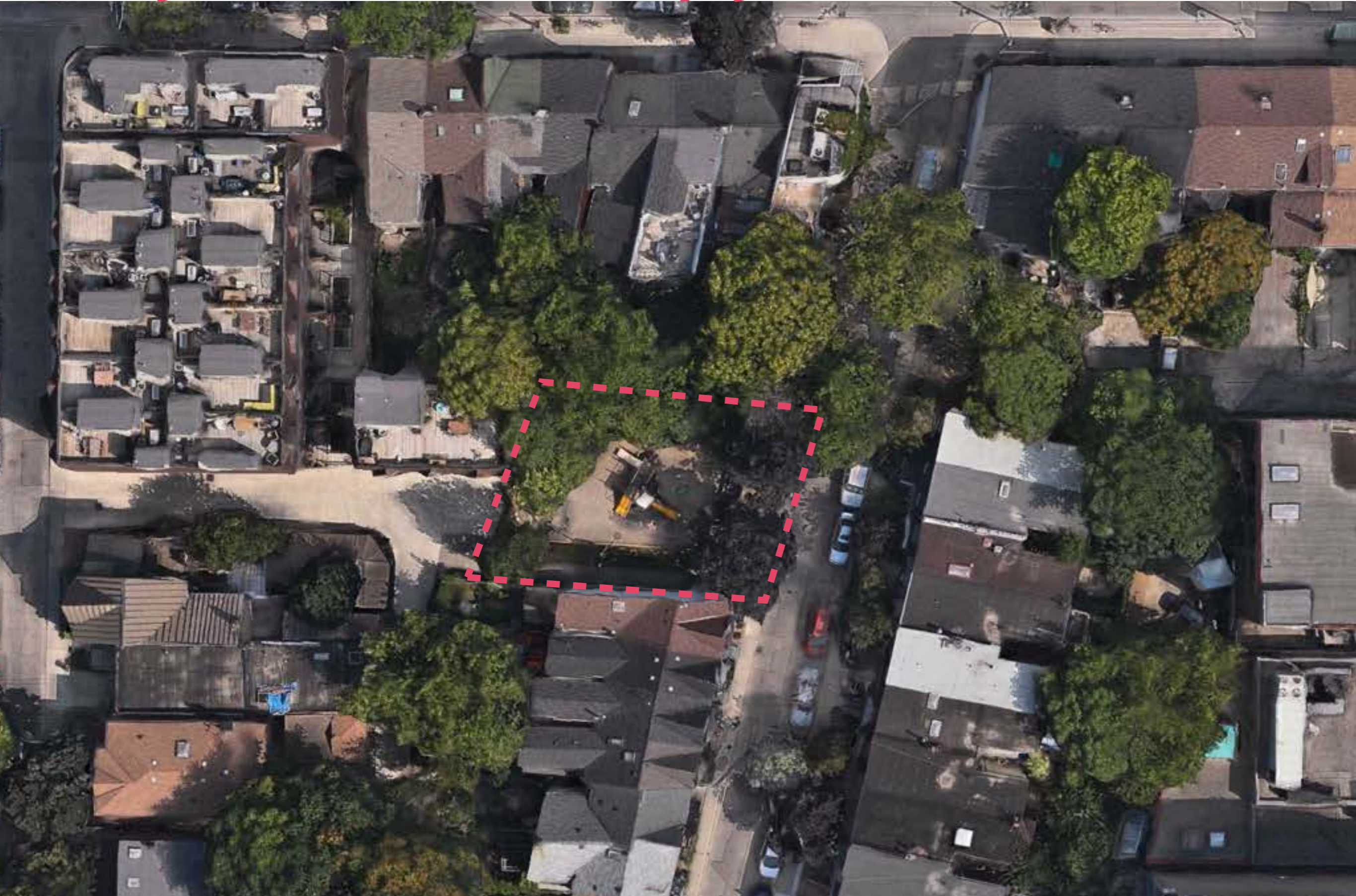
site design

Bright St. Playground

and

**Orphans' Green
(Dog Off Leash)**

Bright Street Playground



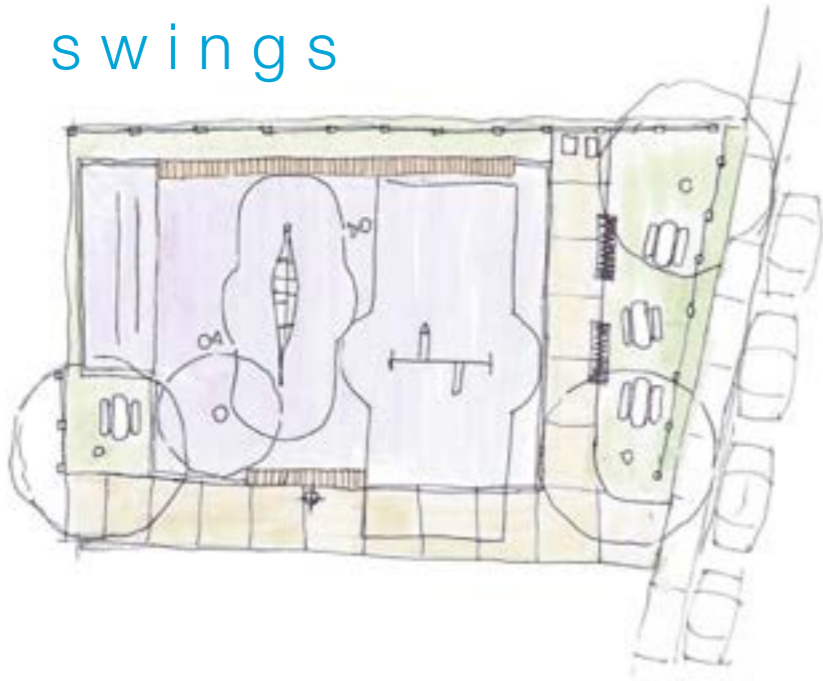
Site review

- ▶ existing equipment and surfacing not CSA-compliant and inaccessible (AODA)
- ▶ existing equipment near end of expected life span
- ▶ no water connection

open houses

August concepts

swings

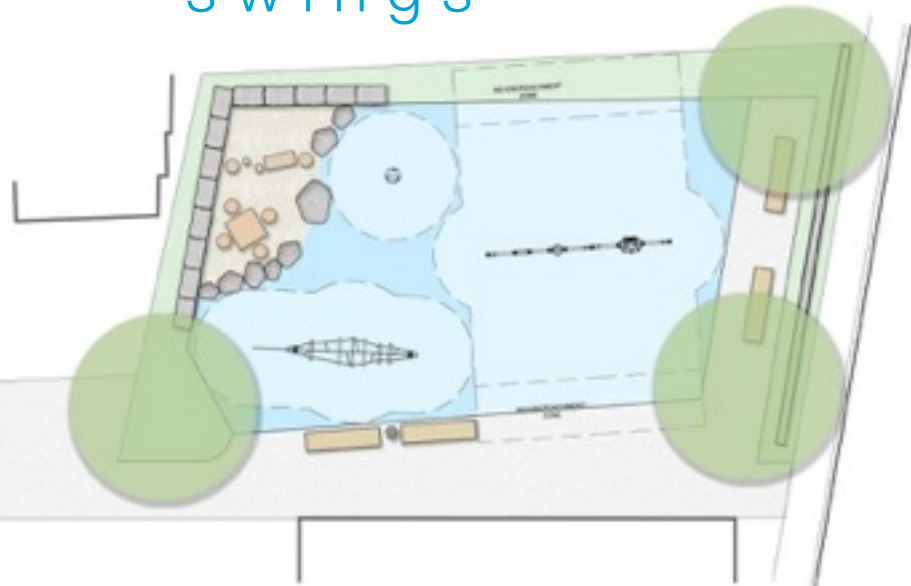


climber

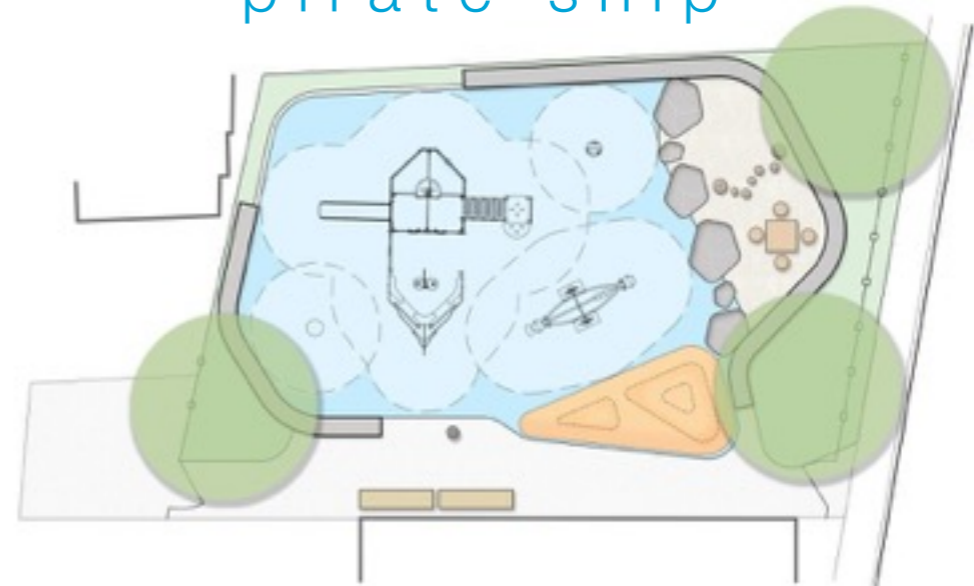


October concepts

swings



pirate ship



public feedback

want

1. separate playground area from dogs
2. play opportunities for < 5 years in age
3. curvilinear concept
4. varied play surfacing (sand, rubber, etc.)
5. more seating

bright street concept

vines
- to train up existing chain link fence

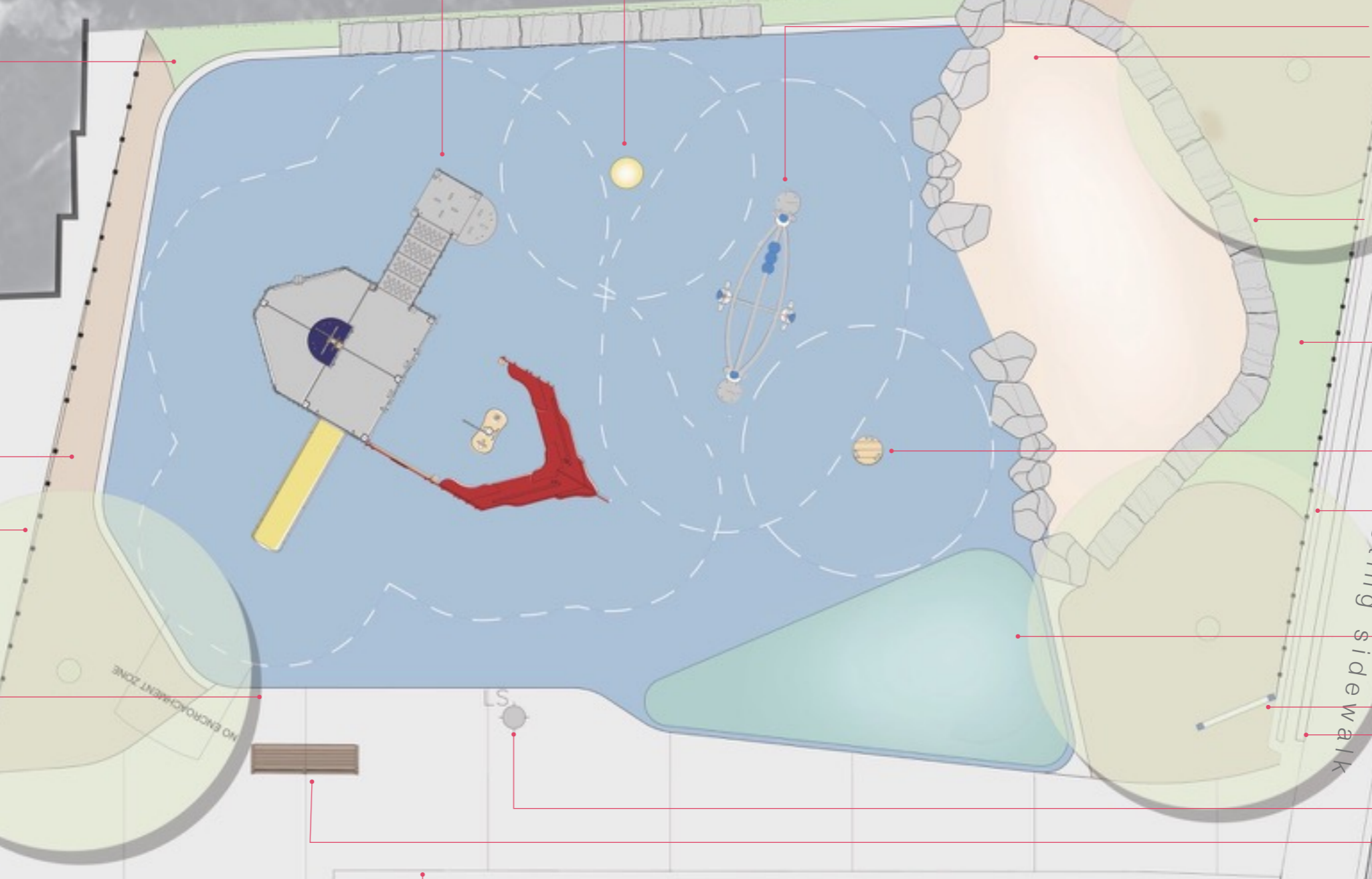
mulch

existing wrought-iron fence

new concrete paving

existing laneway

existing curb



pirate ship
- ages 3+
- slide

spinner

teeter-totter

sand play
- granite boulders edge

armourstone seat wall

groundcover/grasses

spinner

new wrought-iron fence

rubber play mound

relocated sign

provisional curb

existing light

City of Toronto standard bench



elements

Bright St. Playground

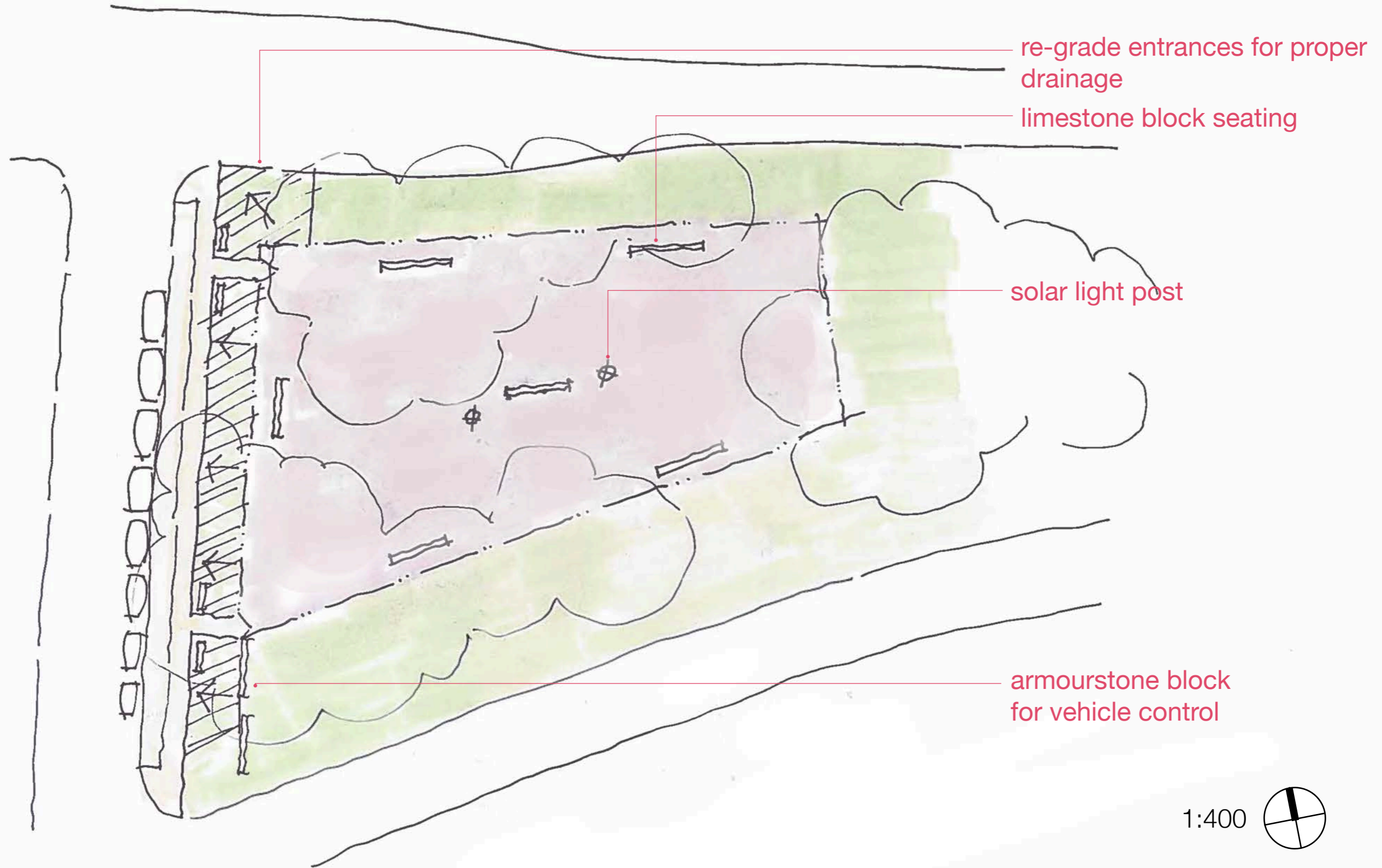


Orphans' Green (Dog Off Leash)



Orphans' Green (Dog Off Leash)

tender



1:400



Orphans' Green (Dog Off Leash)

RICHMOND ST.

tender

PROVISIONAL ITEM 4.0 -
REGRADE AND RESOD AREA ADJACENT TO
FENCE TO ENSURE POSITIVE DRAINAGE

P O W E R S T .



3 @ PROVISIONAL SOLAR LIGHTS
PROVISIONAL ITEM 2.0

4
L10.0

2 @ SOLAR LIGHTS

4
L10.0

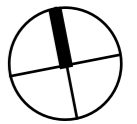
LIMESTONE BLOCK

8
L9.0

8
L9.0

LIMESTONE BLOCK

1:400



elements

Orphans' Green



**Motion Sensing
Included**



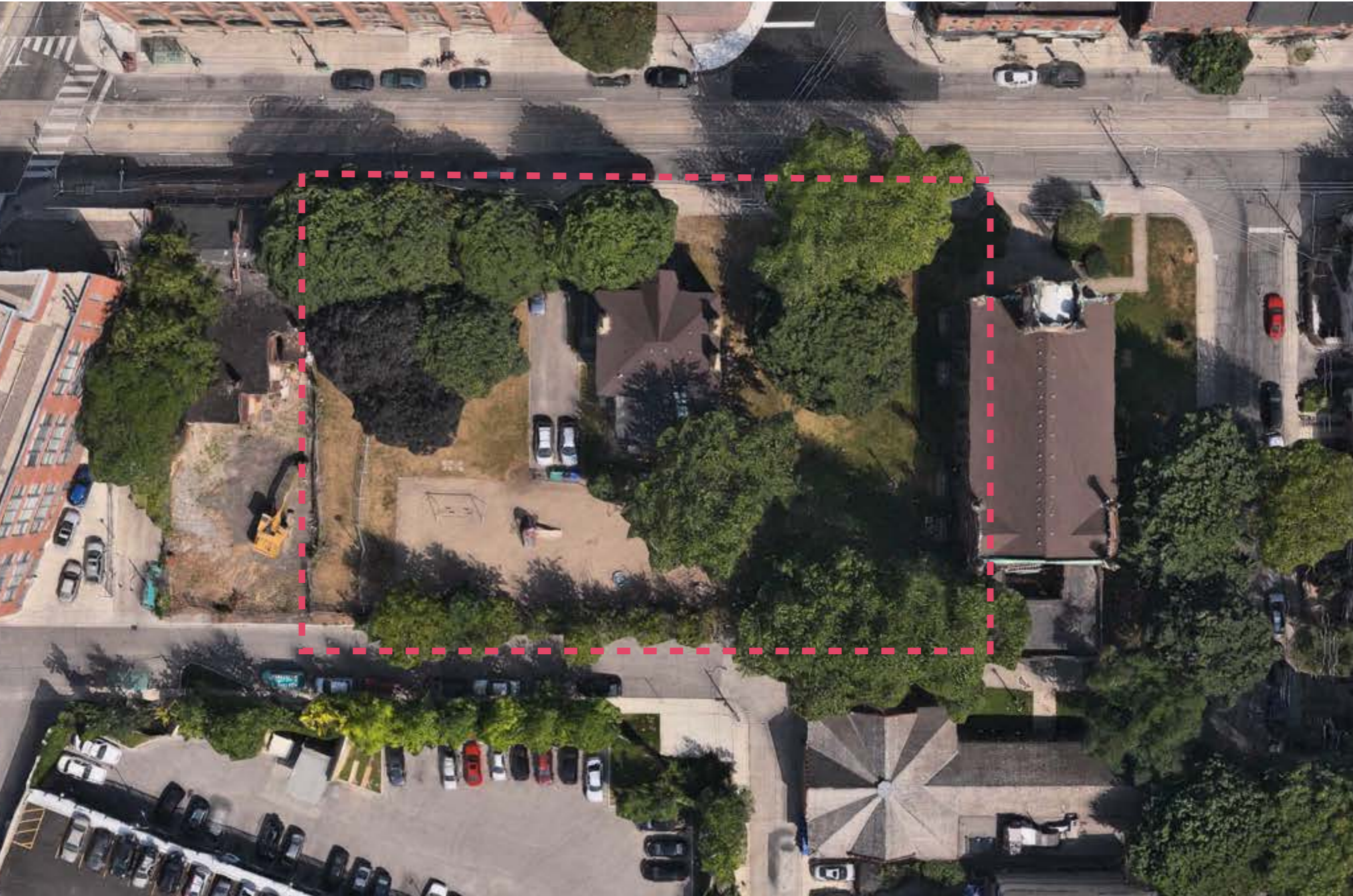
Update

- ▶ Issued for Tender March 17th
- ▶ Site work to begin May 11th with completion by late June or early July

Little Trinity Church Lands

a cultural park

site review

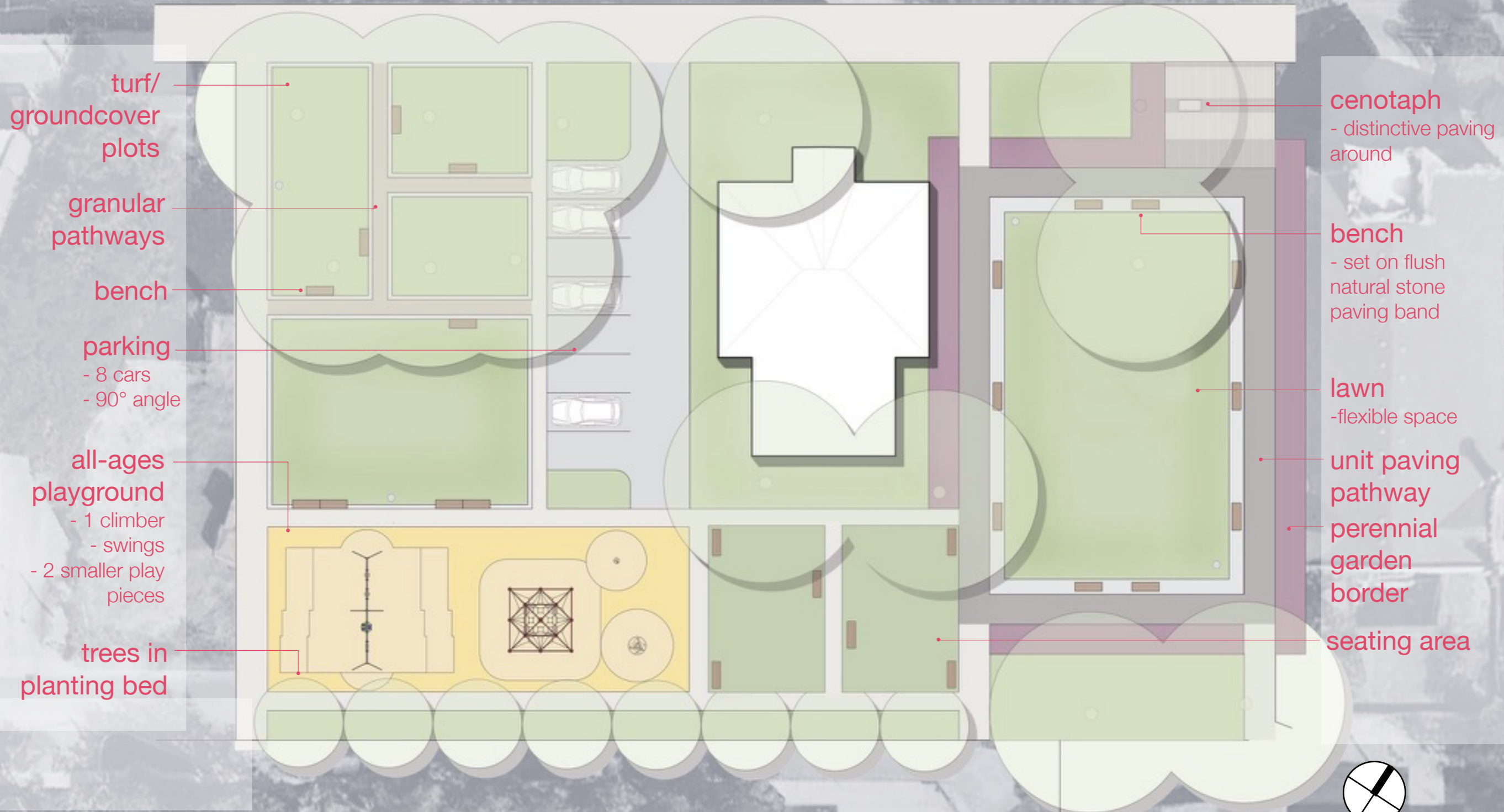


initial comments (July 5 Community BBQ)

1. **like** existing large trees
2. **want** more seating/picnic tables
 - amphitheater/performance space for music
 - raised community garden beds
 - perennial garden
3. **dislike** dog feces on site

concept

KING ST. E



elements

Little Trinity Church Lands



Update

- ▶ Concepts presented to Congregation on Feb. 2
- ▶ Congregation comments summarized in preferred concept

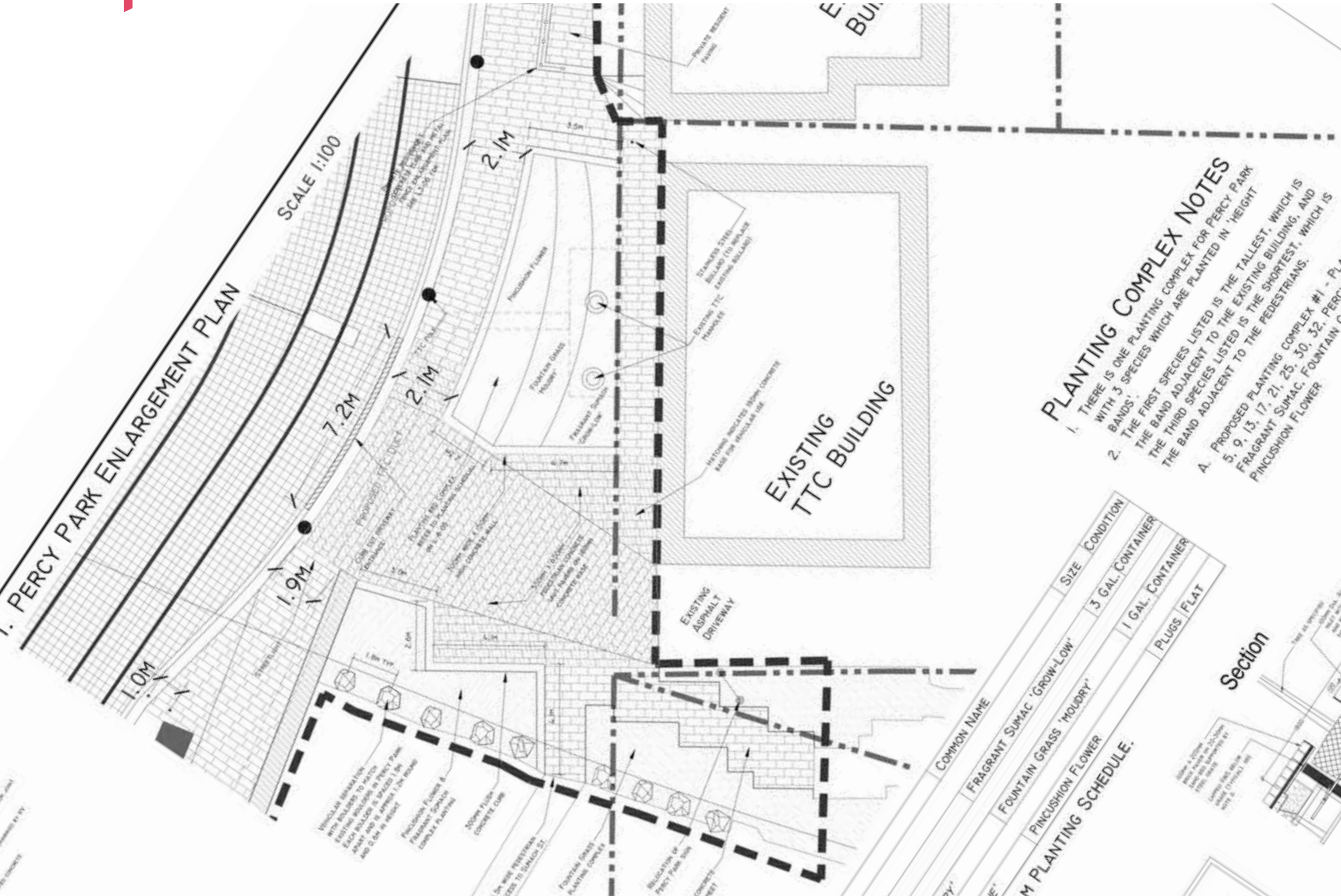
Percy Park

a contemplative park

improvements



improvements



improvements



improvements

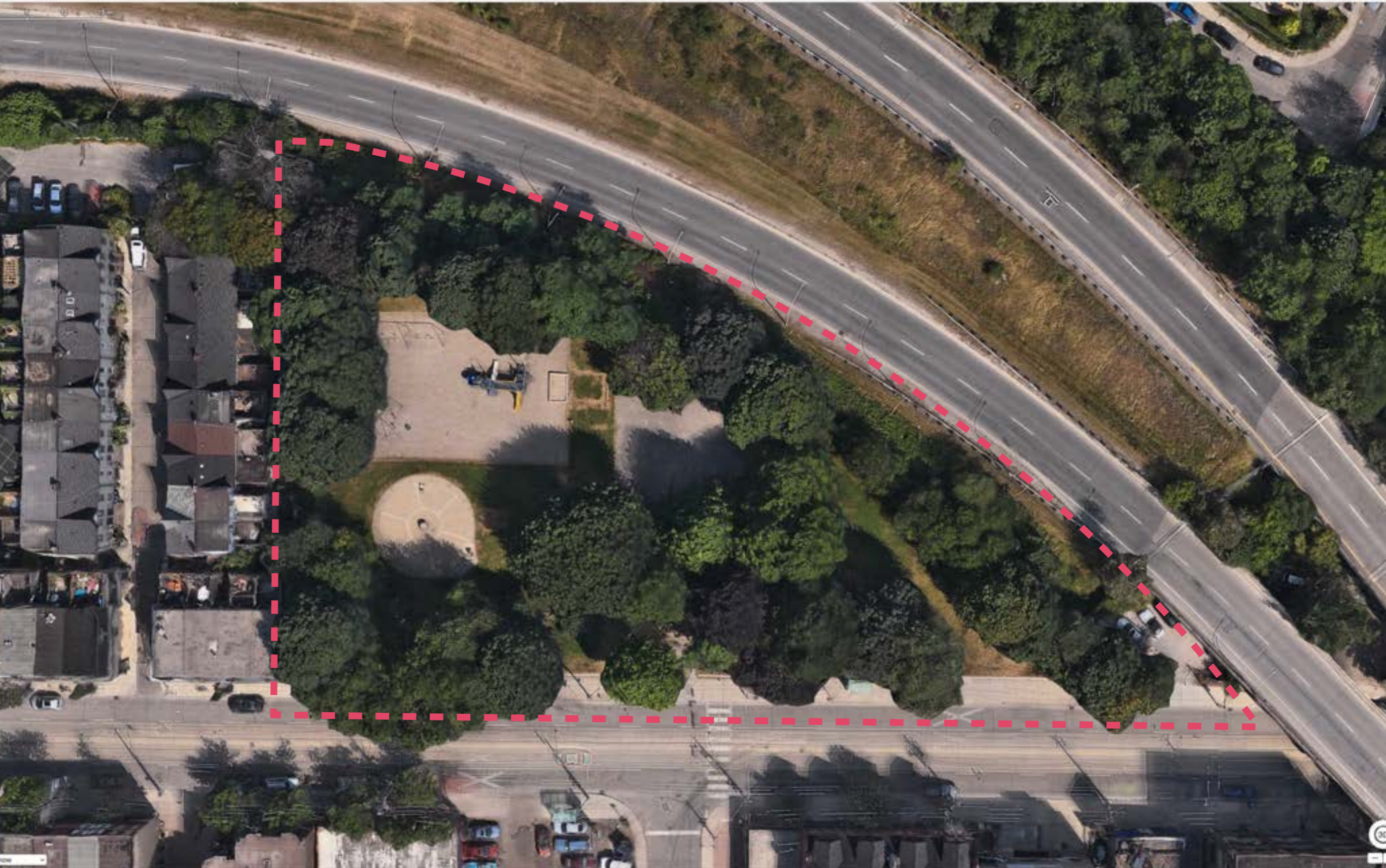
- ▶ add LED lighting (just one post now) - if required
- ▶ vines along ramp wall adjacent to Richmond St.
- ▶ improve connection to Sumach St. (completed)



Sackville Park

a community park

Sackville Park

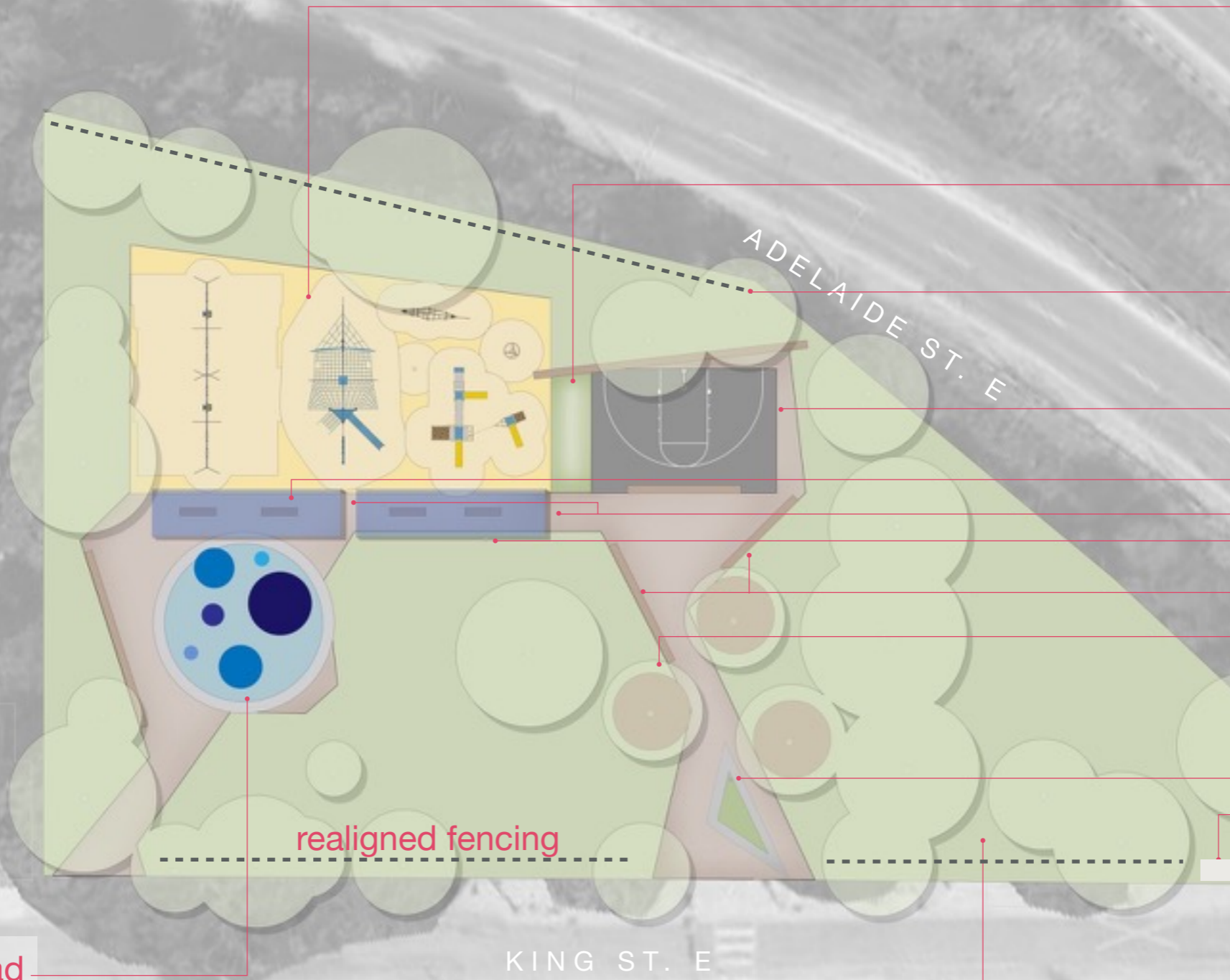


initial comments (July 5 Community BBQ)

1. **like** existing large trees + shade
existing flowers
2. **want** more trees + shade (especially around water play)
tennis
community garden
grass in playground area
splash pad
3. **dislike** so much sand in playground

concept

Sackville Park



all-ages playground

- 8 swings; 4 bays
- 1 jr. play structure
- 1 sr. play structure
- smaller play pieces

berm

- play/seating
- separates court from playground

new 4' tall metal fence

basketball half-court

- bench seating
- shade structures
- existing light standard

seatwall

- seating area
- raised deck seating

- existing light standard
- concrete pad

- informal entry

shaded open lawn

new splash pad

- in-ground and above-ground sprays

realigned fencing



elements

Sackville Park



Sumach-Shuter Parkette

a community park

Sumach-Shuter Parkette



initial comments (July 5 Community BBQ)

1. **like** existing green space
 - large trees
 - open space and size
2. **want** splash pad
 - climbing play structures
 - more benches + picnic tables
3. **dislike** bad grading (flooding)
 - isolated seating area
 - isolated planting bed

concept

Sumach-Shuter Parkette

SUMACH ST.

SHUTER ST.

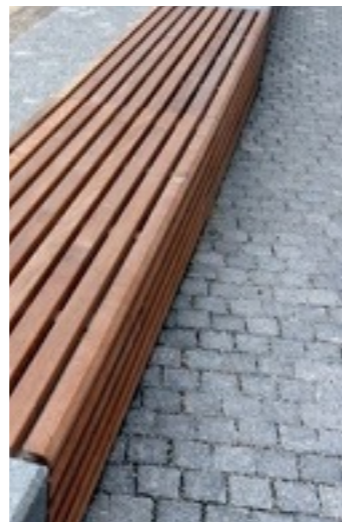
- existing hydro vault
- paved walkways
- perennial garden
- decking
- tables with seating
- seat wall
- splashpad
- playground
 - ages 3+
 - swings
 - climber
 - merry-go-round, spinner
- kids seating
- open lawn
- ping pong tables
- removal of fencing along road





elements

Sumach-Shuter Parkette



questions?

questions/ group discussions

1. A plan of one the parks is provided at each table
2. Please provide comments on the concepts and by writing and drawing on the plans
3. A blank questions sheet has also been provided for additional comments

questions/ group discussions

1. How often do you visit the park
2. What activities or elements of the park do you like?
3. What do you like about the concept and what don't you like about the concept?
4. Are there any other improvements that you would like considered in the concept?

next steps

1. Finalize concepts
2. Concepts generated with input to date and
3. Completion of Bright Street Playground and Power Street DOLA late June or early July
4. Provide costing to inform City Capital budget
5. Provide guide for future detailed design and further community consultation

thank you

closing remarks

Power St.
DOLA

Bright
Street Park

Sumach
Shuter Park

Richmond St E

Adelaide St E

Richmond St E

Little Trinity
Park

Sackville
Park

Percy Park

